

LEGRABOX Installer's Guide

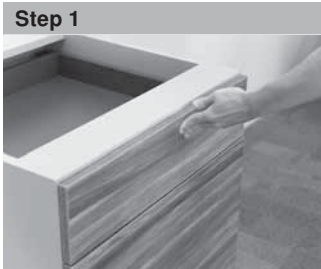


For detailed videos visit
youtube.com/bluminc



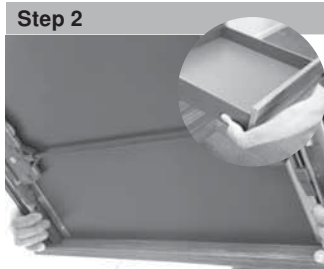
> For more information visit
youtube.com/bluminc

Dimensions in millimeters (inch equivalents as noted) – Technical specifications subject to change without notice For more information about installing Blum products, please visit blum.com or call 1-800-438-6788 for customer service. © 2017 Blum, Inc.



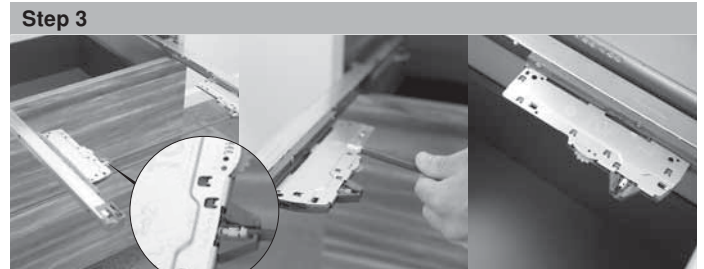
Step 1

First, touch to open drawer.



Step 2

With the drawer fully extended, reach under the drawer and squeeze the release levers for the locking devices. Then pull drawer straight out.



Step 3

Carefully remove the synchronization rod. Repeat these steps on the remaining drawers.

Further details - To watch the TIP-ON BLUMOTION synchronization rod video, please visit youtube.com/bluminc



Step 4

Now install the cabinet, ensuring that the cabinet remains square and true.

For proper function, it is important that the cabinet does not become racked during installation.



Step 5

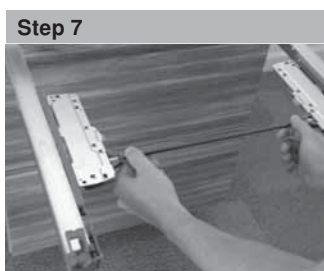
Next, use the gray front gap template to ensure the front gap is set correctly for optimal function of TIP-ON BLUMOTION.

Further details - To watch the TIP-ON BLUMOTION front gap template video, please visit youtube.com/bluminc



Step 6

Touch to extend the right and left runner.



Step 7

Insert the synchronization rod.



Step 8

Insert the drawer.



Additional instructions -->

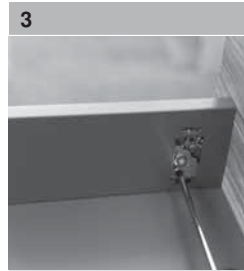
Repeat this process for the other drawers in the cabinet.



1 Remove cover cap



2 Drawer front release



3 Side-to-side adjustment - moves drawer front left or right



4 Height adjustment - moves drawer front up and down



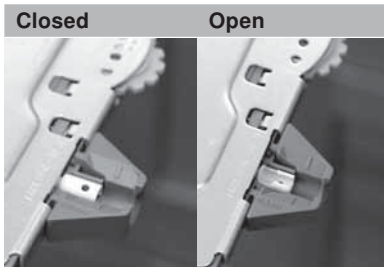
5 Tilt adjustment



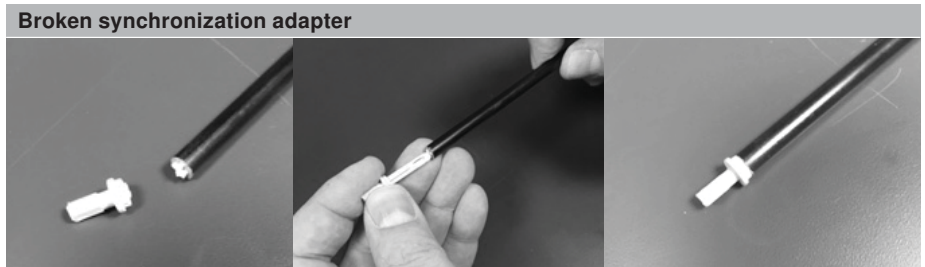
Check to ensure that the runners are level, perpendicular to the face of the cabinet, and parallel to each other.



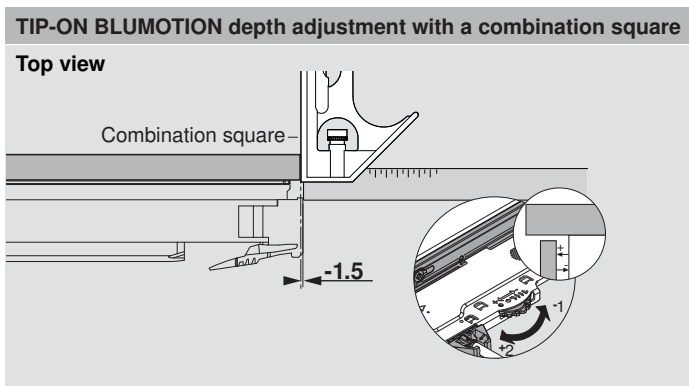
Check drawer box squareness, either by measuring from inside corner to inside corner, or by using a framing square.



To remove or insert the synchronization rod, the pinions must be put in the open position by touching the drawer front or runners to open them.



If a synchronization adapter is broken, it can easily be replaced by simply sliding another in its place.



If a front gap template is not present on the job site, a combination square can be used to set the front gap. Please refer to the LEGRABOX brochure for more information.