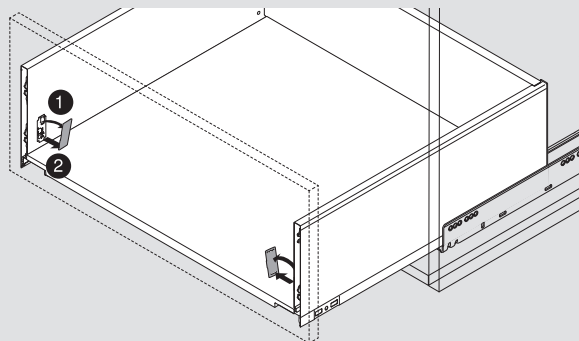


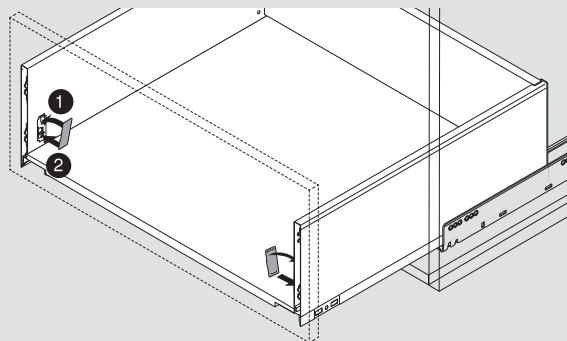
# LEGRABOX adjustments

## Cover cap removal/installation

### Removal



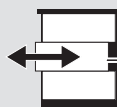
### Installation



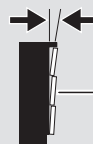
## Height, side and tilt adjustments



1 **Height adjustment**  
 $\pm 2$  (3/32")



2 **Side adjustment**  
 $\pm 1.5$  (1/16")

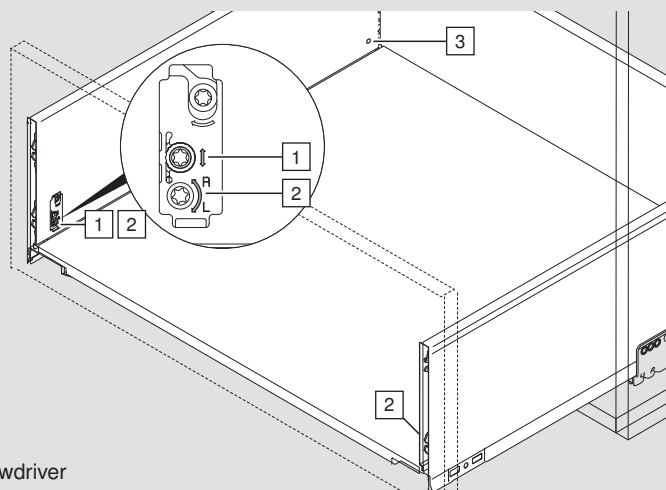


3 **Tilt adjustment**  
M height  $+1.5/-0.5$  (1/16"/1/32")  
C/F height  $\pm 1.5$  (1/16")

**Height adjustment** – Turn the adjustment screw clockwise to raise or lower the drawer front.

**Side adjustment** – Turn adjustment screw towards the **L** to move drawer front left. Turn adjustment screw towards the **R** to move drawer front right.

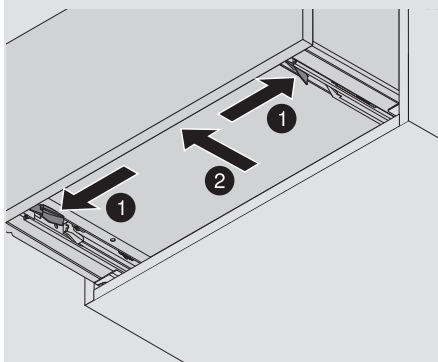
**Tilt adjustment** – To increase the drawer front gap, turn the adjustment screw clockwise, to decrease turn adjustment screw counterclockwise.



**NOTE:** Height, side and tilt adjustments must be achieved with a T20 Torx screwdriver

## Drawer removal

Pull drawer forward to reveal locking devices. Squeeze triggers on locking device and lift drawer box off of runners.



## Drawer front removal

Turn adjustment screw to release front fixing bracket. Lift drawer front away from drawer box.

